

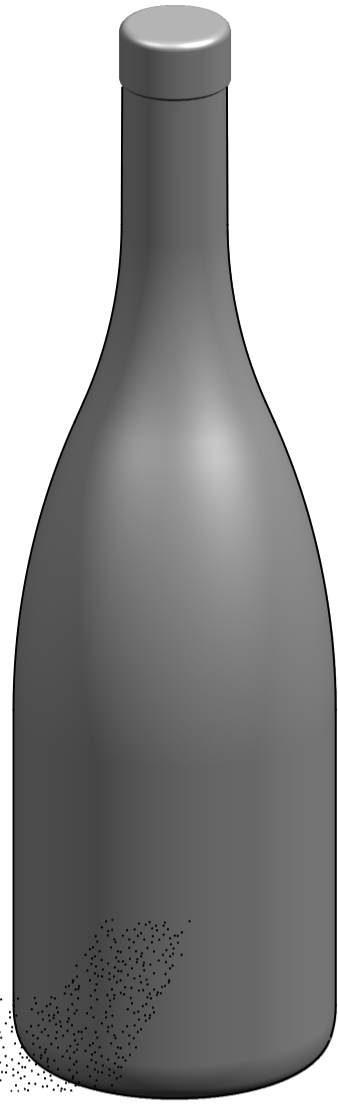
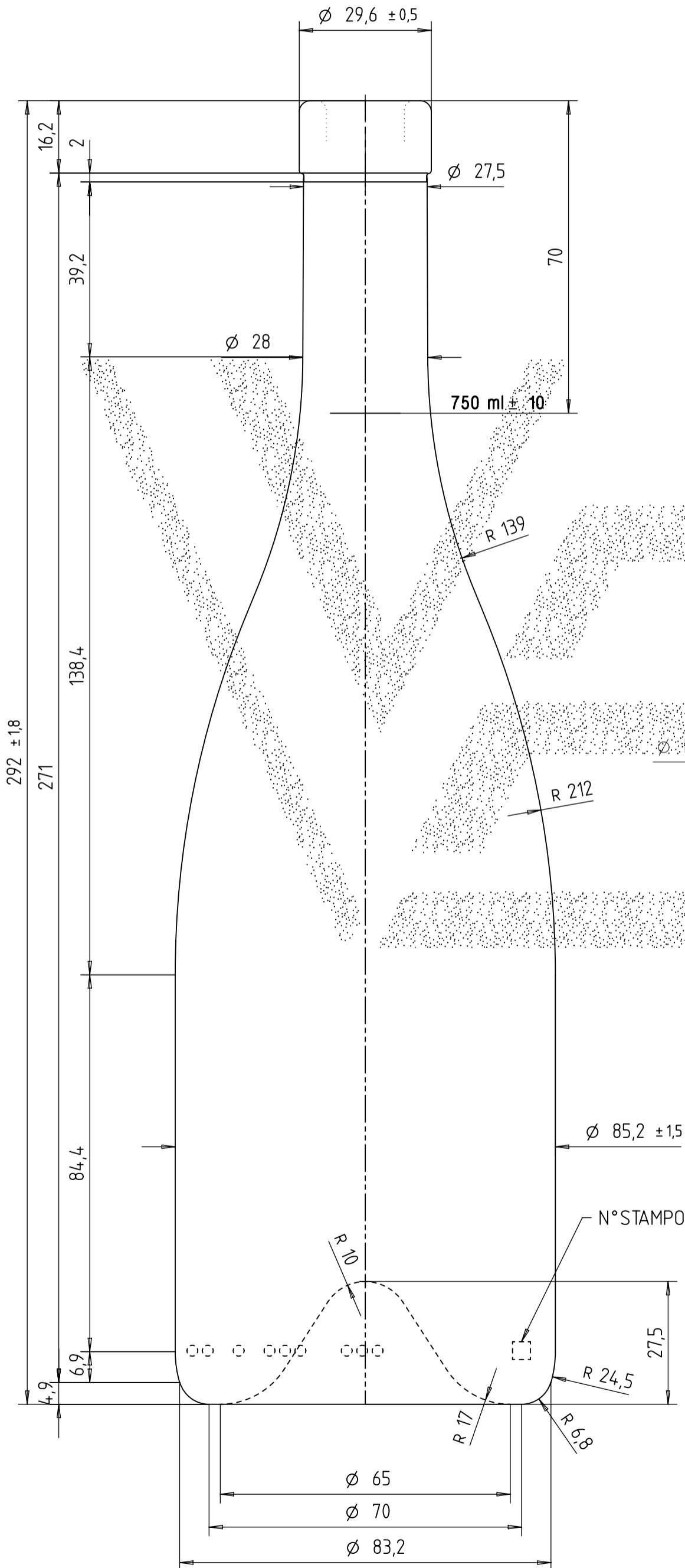
LE QUOTE SONO ESPRESSE IN mm SOLO QUELLE CON INDICAZIONE DI TOLLERANZA SONO IMPEGNATIVE.
 THE DIMENSIONS ARE EXPRESSED IN mm ONLY THOSE WITH INDICATION OF TOLERANCE ARE BINDING.

Riproduzione vietata a norma di legge. Disegno tutelato dal vincolo di segretezza.

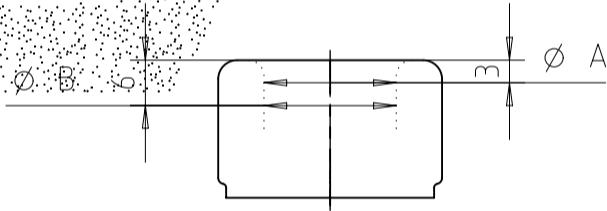
Reproduction prohibited according to the law. Any technical drawings supplied by Vetreria Etrusca are confidential and intended for the use of the addressee company only.

Divergenza Max. dall'asse ortogonale: 3.2 mm.
 Vertical Tolerance:

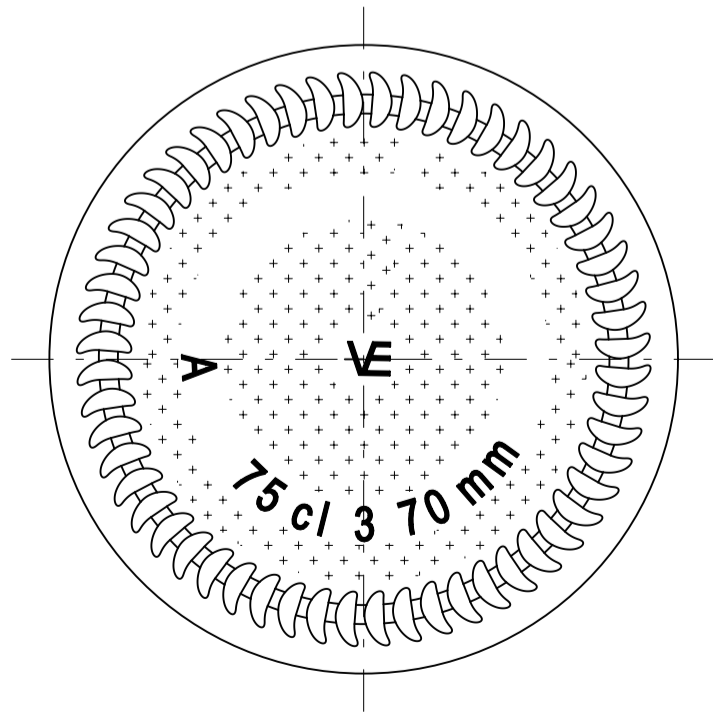
∅ Min. Passante :
 ∅ Min. internal bore: 16 mm.



SCALA 1:2



∅ A = 17,5 ± 0,5
 ∅ B = 17,5^{+0,7}_{-0,5}
 ∅ A ≤ ∅ B



| | | |
|--|--|--------------------|
| ∅ Min. Passante : 16 mm. ∅ Min. internal bore: 16 mm. | EMISSIONE DR | DATA 02/12/03 |
| Capacità: 770 R.B. ml Brinità: BF 44 | CONSULTATO APPROVATO E8 | |
| Imboccatura: BF 44 Finish: | DESCRIZIONE | |
| Peso Vetro: 500 gr. Weight: | REV. 0 | |
| Approvazione Cliente : Customer Approval : | DENOMINAZIONE: BRG PRESTIGE LEGGERA VL 750 | |
| | MATERIALE: VETRO TIPO A | |
| | SCALA: 1:1 | DIS. n° A3 |
| | SPEC. IMBOCCATURA FINISH STD. | PROFILO VINOLOK |
| | CODICE CODE: VARI | |
| | A448-0 | |
| | MONTELUPO FNO Firenze-Italy | |